

Potential Ameliorative Effects of Graviola (*Annona muricata* L.) Fruits on Carbon-tetrachloride Induced Hepatic Injury in Rats: Antioxidant, Apoptotic, Anti-inflammatory Markers, and Histopathological Studies

Yousif A. Elhassaneen (Corresponding Author)

Department of Nutrition and Food Science, Faculty of Home Economics, Minoufiya University, Shebin El-Kom, Egypt
Email: yousif12@hotmail.com

Seham A. Khader

Department of Nutrition and Food Science, Faculty of Home Economics, Minoufiya University, Shebin El-Kom, Egypt

Mohammed A. El-aslowty

Department of Nutrition and Food Science, Faculty of Home Economics, Minoufiya University, Shebin El-Kom, Egypt

Article History

Received: 10 January, 2023


Revised: 29 March, 2023

Accepted: 27 April, 2023

Published: 2 May, 2023

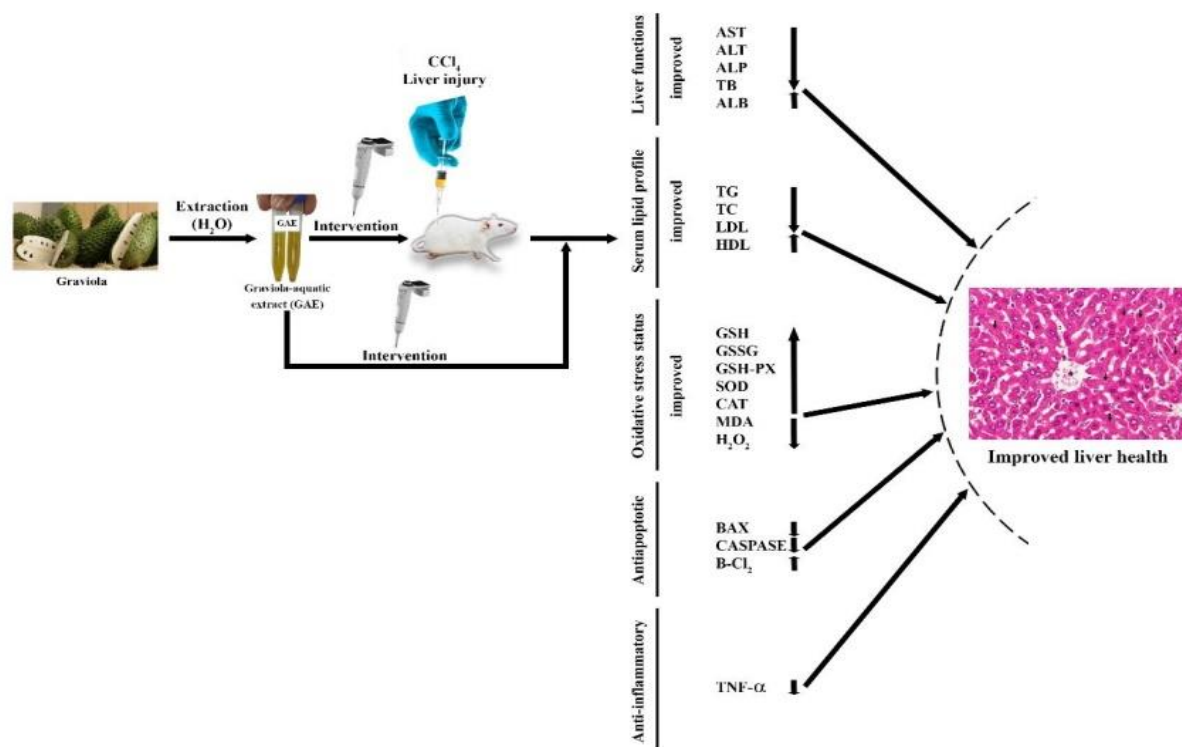
Copyright © 2023 ARPG & Author

This work is licensed under the Creative Commons Attribution International

 CC BY: Creative Commons Attribution License 4.0

Abstract

Plant parts play a crucial function to protect organisms from the toxic/carcinogenic effects of some compounds. The present study was carried out to investigate the protective effects of Graviola aqueous extract (GAE) against carbon tetrachloride (CCl₄) which induced hepatic injury in rats. Thirty male albino Wistar rats were divided into five groups: group I was used as controls, group II received daily GAE (300 mg/kg bw) alone orally for six weeks, group III received by IP injection CCl₄ in olive oil (50% V/V, 2 ml/kg bw), twice a week for two weeks, group IV, CCl₄+GAE (curative group) injected CCl₄ twice a week for two weeks then concomitant with GAE (300 mg/kg BW) daily for next four weeks, and group V, GAE+CCl₄ (prophylactic group), received GAE, 300 mg/kg/day once daily orally four weeks, then concomitant with CCl₄ twice a week for next two weeks. The obtained results showed that the administration of CCl₄ caused hepatotoxicity as monitored by the significant ($p \leq 0.05$) increase in the levels of hepatic markers enzymes (alanine aminotransferase, ALT, aspartate aminotransferase, AST and alkaline phosphatase, ALP), total bilirubin (TB) and a decrease in hematological parameters such as white blood cell (WBC), red blood cell count (RBC), and blood platelet count (PLT). Also, our results showed that CCl₄ caused a significant ($p \leq 0.05$) increase in oxidative stress markers (malondialdehyde, MDA, reactive oxygen species, ROS, nitric oxide, NO), pro-inflammatory tumor necrosis factor-alpha (TNF- α) level, and proapoptotic markers caspase-3, and B-cell lymphoma 2 (BCL-2)-like protein 4 (Bax). Furthermore, a significant ($p \leq 0.05$) decrease in superoxide dismutase (SOD), catalase (CAT), glutathione peroxidase (GSH-Px), reduced glutathione (GSH), and an antiapoptotic agent B-cell lymphoma 2 (Bcl-2) was observed in liver tissue. The detected CCl₄ effects were normalized by GAE administration, either a prophylactic or curative dose. Besides, GAE reduced the histopathological changes induced by CCl₄. In conclusion, GAE was effective in both protecting and enhancing the liver deficits induced by CCl₄ through many potential mechanisms including antioxidant, anti-inflammatory, antiapoptotic properties. Therefore, Graviola extracts up to 300 (mg/kg bw) could be considered a promising hepatoprotective supplement but more human clinical trials are also needed to validate the findings of the current research.



Keywords: Liver functions; Hematological parameters; Serum lipid profile; Liver tissue; Oxidative status; Apoptosis.

1. Introduction

Liver is a major organ only found in vertebrates which performs many essential biological functions body such as plays a key role in the carbohydrate, protein and fat metabolism, processes many of the products (glucose, plasma proteins and urea) that are released into the blood stream, makes some of the clotting factors needed to stop bleeding from acute or injury, secretes bile into the intestine to help absorb nutrient, , stored several products (glycogen, fat and vitamins) in the parenchymal cells, helps the body to fight against infection, and plays a very important and principal part in the detoxification process [1-6]. It is also characterized by its enormous functional reserve, which often masks the clinical impacts of early damage to this organ. With progression of disease or disruption of bile flow, however, the consequences of liver damage can easily become life-threatening [7].

Liver diseases have become one of the major health problems facing various peoples of the world, especially in developing countries. It accounts for approximately 2 million deaths per year worldwide, one million due to complications of cirrhosis and one million due to viral hepatitis and hepatocellular carcinoma [8]. Liver disease has many causes including parasites and viruses, immune system abnormality, genetics, cancer and other growths, chronic alcohol abuse, fat accumulation in the liver (nonalcoholic fatty liver disease), and exposure to certain chemicals or toxins [9]. A number of serious complications can develop in liver disease portal hypertension, varices, ascites, hepatic encephalopathy, infection and liver cancer. For these and other complications, liver disease has represented the most challenging health care problems worldwide which prompted various universities and research centers to innovate a lot of chemotherapy treatments. Over many decades, chemotherapy have been used to treat liver disease patients, but this has been associated with many side effects, in addition to the large financial cost, which often leads to patient non-compliance. It all made of the number of drugs actually used successfully in humans is very small [10]. Thus, there has been a need to explore special alternative therapies from plant sources that are cost-effective and have few side effects, especially since many plants produce an astonishing amount of complex chemicals that we can use as means to 'reduce and treat disease' [5, 11-13].

Plants as medicines are mentioned in historic documents dating back many thousands of years. They have been used for years to treat diseases [14]. It is estimated that 80% of the world population is dependent on traditional medicines for primary healthcare [15]. This dependence is significantly due to the fact that plants are considered the only available, affordable and trusted medicine to bring about sustainable solutions to health problems. With this context, our several studies have been used different plant parts, contains huge bioactive compounds and exhibited different biological activities, in the preventive/curative studies of the liver disease [2, 3, 5, 16-18]. All these studies and others gave encouraging results, which led to the continuation of this direction of research, and our choice in this study fell on the fruits of Graviola.

Graviola, (*Annona muricata*) is a broadleaf, flowering, evergreen tree that belongs to the Annonaceae family, order Magnoliales and Division Magnoliophyta. The genus *Annona* contains approximately 166 species of trees and shrubs among which *Annona muricata* is the most widely grown. Most members of this genus are cultivated for the edible and nutritious fruit; several other companies also produce edible fruits [19]. Store Graviola fruit at room temperature until soft, then refrigerate for up to 3 days. It is cut after getting rid of the peel and seeds completely,

then it is eaten fresh, and it can also be used in salads, desserts, and even mixed with juices. Some studies have shown that fruit is a good source of nutrients (protein, carbohydrates, fiber and potassium). Also, several studies have been found to contain different classes of natural compounds such as Alkaloids, acetogenins, phenolic compounds, carotenoids and amides with important biological activities [20-23]. It is used in traditional medicines to treat a variety of ailments such as, mood improvement, improve eye health, prevent high blood pressure, prevention of anemia, important for bone health, diabetes prevention, improve heart health Treatment of arthritis and rheumatism Excess weight loss Promote healthy hair and skin, strengthening the immune system Promote digestion although their effectiveness has not yet been scientifically validated [19-21, 24-26]. Although, there is dearth information related to the potential role of Graviola fruits in promoting the liver health. Therefore, the present study aims to investigate the potential protective effects of Graviola fruits against liver injuries induced by carbon tetrachloride in experimental rats.

2. Materials and Methods

2.1. Materials

2.1.1. Graviola Fruits

Fruits of the Graviola (*Annona muricata*) were obtained from Horticulture Research Institute, Agricultural Research Center, Ministry of Agriculture, Giza, Egypt. Taxonomic confirmation of Graviola was carried out in Faculty of Agriculture, Menoufia University, Shebin El-Kom, Egypt.

2.1.2. Chemicals

Ethylenediaminetetraacetic acid (EDTA), phosphate-buffered saline (PBS) and carbon tetrachloride (CCl₄), as 10% liquid solution, was obtained from ElGhohorya Company for Trading Drugs, Chemicals and Medical Suppliers, Cairo Egypt. Casein was obtained from Morgan Chemical Co., Cairo, Egypt. All other chemicals and solvents used were of analytical grade were purchased from ElGhohorya Company for Trading Drugs, Chemicals and Medical Suppliers, Cairo Egypt.

2.1.3. Kits

Kit's assays for aspartate aminotransferase (AST), Alanine aminotransferase (ALT), alkaline phosphatase (ALP) were purchased from BIODIAGNOSTIC, Dokki, Giza, Egypt; for albumin (Alb), Triglycerides (TG), Total cholesterol (TC), HDL-Cholesterol and LDL-Cholesterol were purchased from El-Nasr Pharmaceutical Chemicals Company, Cairo, Egypt; for TNF- α was provided by Adlitteram Diagnostic Laboratories Inc., San Diego, CA, US, Egypt; and for GSH and GSSG were purchased from MyBioSource, Inc., San Diego, CA, USA, assayed GSH and GSSG.

2.2. Methods

2.2.1. Preparation of Graviola Aquatic Extracts (GAE)

Graviola fruits were washed, cut into equal slices and dried in a hot air oven (Horizontal Forced Air Drier, Proctor and Schwartz Inc., Philadelphia, PA) at 50 °C for 6 hours. The dried slices were milled to a fine powder in high mixer speed (Moulinex, France). The material that passed through an 80 mesh sieve was retained for use. Graviola powder was used for GAE preparation according to Abd Elalal, *et al.* [18]. In brief, A 20 g from Graviola powder plus 180 ml De-ionized water (Milli-Q 18.2 M Ω) were homogenized and transferred to a beaker and stirred at 200 rpm in an orbital shaker (Unimax 1010, Heidolph Instruments GmbH & Co. KG, Germany) for 1 h at room temperature. The extract was then separated from the residue by filtration through Whatman No. 1 filter paper. The remaining residue was re-extracted twice, and then the two extracts were combined. The residual solvent of was removed under reduced pressure at 55°C using a rotary evaporator (Laborata 4000; Heidolph Instruments GmbH & Co. KG, Germany).

2.2.2. Biological Experiments

2.2.2.1. Ethical Statement

The study was approved with the NIH Guide for the Treatment and Use of Animals from the Scientific Research Ethics Committee (SREC), Faculty of Home Economics, Shebin El-Kom, Egypt (Approval # 49- SREC- 02-2021).

2.2.2.2. Animals

Animals used in this study, adult male albino Sprague-Dawley rats (160 \pm 8.9g per each) were purchased from the Egyptian Institute for Vaccine and Serological Production, Helwan, Egypt.

2.2.2.3. Experimental Design

All biological experiments performed a complied with the rulings of the Institute of Laboratory Animal Resources, Commission on life Sciences, National Research Council NRC [27]. Rats (n=30 rats) were housed individually in wire cages in a room maintained at 25 \pm 2 °C, relative humidity (55 \pm 3%), a 12-hr lighting cycle and kept under normal healthy conditions. All rats were fed on basal diet (prepared according to formula as mentioned by Reeves, *et al.* [28] for two weeks before starting the experiment for acclimatization. After that, the rats were randomly allocated into five groups as follow: 1) control group, received normal saline (0.9%) with the same procedure and volume as Graviola-treated groups, orally once daily for six weeks, 2) GAE group, orally

administrated Graviola aquatic extract at 300 mg/kg BW daily for six weeks, 3) CCl₄ group, administrated by intraperitoneal (IP) injection of CCl₄ in olive oil, 50% V/V (2 ml/kg bwt), twice a week for two weeks to induce chronic damage of the liver according to Jayasekhar, *et al.* [29], 4) CCl₄+GAE (curative group) CCl₄ injection by 2 ml/kg twice a week for two weeks then concomitant with GAE (300 mg/kg BW) daily for next four weeks, and 5) GAE+CCl₄ (prophylactic group), received GAE, 300 mg/kg/day once daily orally four weeks, then concomitant with CCl₄ injection by 2 ml/kg bwt twice a week for next two weeks. Graviola dry extract was dissolved in normal saline (0.9%) and administered using gavage needles. The dose of GAE was selected according to the previous study of Shukry, *et al.* [30]. Each of the above groups was kept in a single cage for six weeks. During the experimental period (six weeks), the diet consumed was recorded twice a weekly and body weight was recorded every week. The body weight gain (BWG, %), feed intake (FI) and feed efficiency ratio (FER) were determined according to using the following equations: BWG% = (Final weight – Initial weight)/ Initial weight×100, FER = gain in body weight (g/42 day)/ feed intake (g/42 day).

2.2.2.4. Sampling

At the end of experiment period (six weeks) blood samples were collected after 12 hours fasting using the abdominal aorta and rats were scarified under ether anesthetized. Blood samples were collected part in clean dry centrifuge tubes and left to clot at room temperature, then centrifuged for 10 minutes at 3000 rpm to separate the serum according to Drury and Wallington [31]. The clear, not hemolyzed sera was carefully aspirate, transferred into labeled Eppendorf tubes and stored frozen at -20°C for further biochemical analysis. The other part was collected in sterilized EDTA tubes for hematological analysis. Liver samples from each rat were removed, weighed and used for liver homogenate preparation such as mentioned by Stroev and Makarova [32]. In brief, small pieces of liver were then transferred to a sterile vessel containing cell lysis buffer (FBS 0.025M, pH 7.4) solution and immediately ground to make a tissue homogenate (1g/4ml). The homogenates were centrifuged at 750g for 15 minutes at 4 °C and the supernatant was collected to a new microcentrifuge tube and the total protein concentration was measure according to the method of Lowry, *et al.* [33]. The samples were diluted to 10 mg protein/mL with 1X FBS and used for biochemical assays. The different samples of the liver tissue were stored in neutral formalin (10%) for histopathological studies.

2.2.2.5. Hematological Analysis

Hematological parameters [hemoglobin (Hb), red blood cells (RBCs), white blood cells (WBCs), platelets, neutrophil and lymphocyte] were performed by automatic measurement using an Avantor Performance Materials Inc. Business, Center Valley, USA (H32 VET 3-Part differential analyzer of hematology).

2.2.2.6. Biochemical Analysis

Serum alanine aminotransferase (ALT) and serum aspartate aminotransferase (AST) activities were measured in serum using the modified kinetic method of Tietz [34]. Alkaline Phosphatase (ALP) activity was determined using modified kinetic method of Vassault, *et al.* [35]. Albumin (Alb) was determined in serum according to the method of David, *et al.* [36]. The total bilirubin (TB) level in the serum was measured by a colorimetric method of Kaplan, *et al.* [37]. Triglycerides (TGs), Total cholesterol (TC), HDL-Cholesterol and LDL-cholesterol were determined in serum according to the methods of Fossati and Prencipe [38], Lopes-Virella, *et al.* [39] and Ahmadi, *et al.* [40], respectively. TNF- α was determined such as mentioned by Tavakkol, *et al.* [41], by a sandwich enzyme-linked immunosorbent assay (ELISA), utilizing two monoclonal antibodies directed against separate antigenic determinants on rat TNF- α .

2.2.2.7. Analysis of the Antioxidant/Oxidant Status in Hepatic Tissues

Glutathione fractions (GSH and GSSG) were measured colorimetrically in serum samples such as described by Alisik, *et al.* [42]. Glutathione peroxidase (GSH-Px) and catalase (CAT) activities were measured as mentioned by Splittgerber and Tappel [43] and Aebi [44], respectively. Superoxide dismutase (SOD) activity was measured according to the method of Mett and Müller [45]. GSH-Rd activity was determined according to the method recommended by the International Committee for Standardization in Haematology ICSH [46]. Liver nitric oxide (NO) was determined by the method of Montgomery and Dymock [47]. Liver homogenate malonaldehyde (MDA) content was measured using the colorimetric method described by Buege and Aust [48] based on the reaction of thiobarbituric acid (TBA) with MDA, one of the aldehyde products of lipid peroxidation. Reactive oxygen species (ROS) was determined by a colorimetric method described by Erel [49].

2.2.2.8. Analysis of the Liver Cell Apoptosis

Liver samples were prepared and analysis for the B-Cell Lymphoma 2 (Bcl-2), Bcl-2-like Protein 4 (Bax), and caspase-3 by using of flow cytometer instrument (Becton Dickinson, San Jose, CA, USA) according to the method of Gong, *et al.* [50].

2.2.2.9. Histopathological Studies

Liver tissues were prepared for histopathological studies such as described by Drury, *et al.* [51]. The tissues were accurately fixed in a neutral formalin solution (10%). They were dehydrated in an ascending series of ethanol,

were cleared in xylene, were embedded in paraffin wax, and were sectioned at 5–7 μm by microtome and were stained with eosin and hematoxylin. The stained sections were examined to detect histopathological changes.

2.3. Statistical Analysis

All data were expressed as means \pm SD. Statistical analysis was performed with the Student *t*-test and MINITAB-12 computer program (Minitab Inc., State College, PA). The differences were statistically significant at $p \leq 0.05$.

3. Results and Discussion

3.1. Effect of Graviola Aquatic Extract (GAE) on BWG, FI and FER of Hepatotoxic Rats Induced by CCl_4

BWG, FI and FER of rats injected by CCl_4 and orally administered GAE were shown in Tables (1). From such data it could be noticed that at the end of the experiment (8 weeks), the CCl_4 -treated rats exhibited significantly ($p \leq 0.05$) decreased in BWG, FI and FER compared to the normal group. However, orally administered of the rat diets with GAE (300 mg/kg BW) for daily for four weeks significantly ($p \leq 0.05$) increased the levels BWG, FI and FER with the positive control group. Concerning control one, there were no significant shifts with the GAE treatment. Such data are in agreement with that observed by several authors who found that CCl_4 induced significantly decreasing in all of these factors in rats [2, 5, 16, 52, 53]. Also, Hamzawy, *et al.* [54] and Abd El-Rahman [55] reported that hepatic rats reveal significant reduction of the body weight and feed intake. With this context, Morresion and Hark [56] showed that liver disease can lead to malnutrition and the major causes of malnutrition in patients with liver disease are poor dietary/food intake, maldigestion, malabsorption and abnormalities in the metabolism and storage of macro and micro nutrients. Also, Dickerson and Lee [57] reported that many patients with acute or chronic liver disease are ill and commonly lose weight. Oral administration of GAE led to an improvement in body weight close to normal group. Such of these observations are in agreement with that reported by Chokshi [58] and Arthur, *et al.* [59]. In line with these results, several studies have come to confirm that injected rats by CCl_4 caused decrease in both body weight which improved by consumption of plant parts contains bioactive compounds such as found in GAE [2, 3, 16, 60-63].

3.2. Effect of Graviola Aquatic Extract (GAE) on the Hematological Parameters of Hepatotoxic Rats Induced by CCl_4

Hematological data of rats injected by CCl_4 and orally administered GAE were shown in Tables (2). Such data indicated that Hb, RBCs, WBCs, platelets, neutrophil and lymphocyte were significantly ($p \leq 0.05$) decreased in the CCl_4 -treated group compared to the control and GAE groups. Graviola-treated groups, either prophylactic or curative, showed a significant ($p \leq 0.05$) increase in Hb, RBCs, WBCs, PCV%, platelets, neutrophil and lymphocyte related to the CCl_4 -treated group.

The present research data confirmed that CCl_4 has harmful effects on hematological parameters, with characteristic leukopenia. Such data are consentience with Jirova, *et al.* [64] and Mandal, *et al.* [65] who found that depletion in the count of RBC's along with the Hb level was detected in rats treated with CCl_4 which could be attributed to disturbed hematopoiesis, destruction of erythrocytes, and reduction in the rate of their formation and/or enhanced removal from circulation due to CCl_4 toxicity. Also, according to Ballinger [66], depletion in erythrocytes count and Hb level leads to iron deficiency anemia which is characterized by a microcytic hypochromic blood picture, also hyperactivity of bone marrow, which leads to production of red blood cells with impaired integrity that are easily destroyed in the circulation. This could be another reason for decreasing hematological values [67]. The present study showed that the GAE caused an improvement of these parameters to a nearly normalized value in rats treated with CCl_4 ; this protective effect may be mediated through several mechanisms since the extract itself is a complex mixture of several nutrients (vitamins and minerals) and phytochemicals (phenolics, alkaloids, acetogenins and volatile compounds) [19]. Vitamins C and E are strong antioxidants which play an important role in detoxification process through removing the free radicals, protecting DNA from oxidative damage and reducing micronucleus (MN) frequencies in polychromatic erythrocytes of bone marrow [68, 69]. Phytochemicals detected in GAE exhibited several biological effects including antioxidant and scavenging activities and inhibiting the lipid peroxidations [18-20].

3.3. Effect of Graviola Aquatic Extract (GAE) on Liver Function Parameters of Hepatotoxic Rats Induced by CCl_4

The level of liver enzymes AST, ALT and ALP, and the TB in the GAE- treated group were higher than that of the control and Graviola groups. In the same context, the all GAE-treated groups showed significant ($p \leq 0.05$) decreases in these parameters. On the other side, the opposite direction was observed for the alb. Our data showed that CCl_4 can significantly increase the liver enzymes ALT, AST and ALP, due to its cytotoxic effects, which resulted in damage to the structure and function of the liver cell membrane and intracellular organelles and the release of these enzymes in the circulation [63, 70]. This liver damage is caused by the metabolism of CCl_4 to trichloromethyl radicals ($\text{CCl}_3\cdot$) by liver cytochrome P_{450} which actively binds to O_2 forming trichloromethyl peroxy radicals ($\text{CCl}_3\text{OO}\cdot$), which then causes lipid peroxidation to membrane-bound fatty acids. Serial enzyme measurements, AST, ALT and ALP are often considered sensitive markers for determining the course of liver

damage due to their presence of the cytoplasm facilitates blood flow after liver cell damage [71, 72]. Our finding showed that GAE significantly ($p \leq 0.05$) reducing AST, ALT and ALP levels which demonstrating that it can prevent live cells damage. This prophylactic/curative effects could be attributed to GLP content of some important nutrients and bioactive compounds. In similar studies, Graviola extracts mainly vitamins and phytochemicals (phenolics, alkaloids, acetogenins and volatile compounds) exhibit protective activities against liver injury induced by toxic chemicals including CCl_4 [17, 19]. On the other hand, serum bilirubin levels are often enhanced under GAE intervention. Bilirubin is an endogenous compound that can be toxic under certain conditions but, on the other hand, mild unconjugated hyperbilirubinaemia might protect against tumour development. Several studies indicated that plant parts contains different classes of bioactive compounds such as found in GAE which have the ability to reduce bilirubin levels through the extract active regulators increase the activity of enzymes, synthesis of transporter, and steps related to bilirubin clearance pathway [19, 63, 73-75]. On the other hand, serum albumin levels are often enhanced under GAE intervention. In similar studies, CCl_4 -induced significant decrease in the serum albumin content as the consequence of liver injury [55, 61, 62, 76]. Another study of Koneri, *et al.* [77] indicated that hypoalbuminaemia is most commonly in the case of advanced chronic liver diseases and a useful index of the severity of cellular dysfunction in such diseases. Our findings indicated that GAE significantly ($p \leq 0.05$) increased serum Alb levels which demonstrating that it can prevent or repair the liver cells damage. Such a role of the GAE in manipulating the serum albumin level is of high importance, since human serum albumin is the major protein of blood plasma and constitutes about 50%. It is the transport protein that binds to and carries around various ligands such as water, fatty acids, hormones, bilirubin, thyroxin (T4), pharmaceuticals, and cations (Na^+ , K^+ , and Ca^{2+}). Thus, one of the main functions of albumin is to regulate the oncotic pressure of blood [78, 79].

3.4. Effect of Graviola Aquatic Extract (GAE) on Serum Lipid Profile Parameters of Hepatotoxic Rats Induced by CCl_4

The level of serum lipid profile parameters (TG, TC and LDL-c) in the CCl_4 -treated group was higher than that of the control and GAE groups. In the same context, the all GAE-treated groups showed significant ($p \leq 0.05$) decreases in these parameters. On the other side, the opposite direction was observed for the HDL-c. This result was according with that obtained by Abd El-Rahman [55] and ElSamouny [63] who reported that CCl_4 increased cholesterol synthesis and hyperlipidemia, with increased serum TG and TC, shifting the glucose metabolism towards lipogenesis. The prophylactic and curative effects of GAE in enhanced the serum lipid profile parameters could be attributed to the involvement of hypolipidemic effect in the GAE [59, 80]. The different biological effects (hypolipidemic, antioxidant and scavenging activities) of GAE probably due to the presence of bioactive compounds such as alkaloids, acetogenins and polyphenolic compounds cause decreasing cholesterol absorption by deactivating the coenzyme-A (HMG-CoA) reductase hydroxymethylglutaryl [81]. Also, McAnlis, *et al.* [82] suggested that quercetin found in GAE, having a high affinity for protein, was bound to albumin and never incorporated into the LDL particle. In recent years, however, the possible hypocholesterolemic effects of several dietary components, such as found in Graviola including, alkaloids, polyphenoles, acetogenins, carotenoids, amides, cyclopeptides and megastigmanes etc have attracted much interest. Such compounds found in GAE exert their beneficial effects on cardiovascular health by antioxidant and anti-inflammatory activities [83-85]. LDL oxidation and endothelial cell damage is believed to be involved in the early development of atherosclerosis [86] Researchers found that presence of phenolics such quercetin significantly reduced LDL oxidation *in vitro* from various oxidases including 15-lipoxygenase, copper-ion, UV light, and linoleic acid hydroperoxide [84, 86, 87]

3.5. Effect of Graviola Aquatic Extract (GAE) on Liver Oxidative Status Parameters of Hepatotoxic Rats Induced by CCl_4

Data presented in Table (5) showed the effect of GAE on liver oxidative status parameters of hepatotoxic rats induced by CCl_4 . From such data it could be noticed that a significant ($p \leq 0.05$) decreasing in hepatic GSH, GSSG, GSH-Px, SOD and CAT levels in the CCl_4 group compared to the control and GAE groups. The GAE intervention to rat groups resulted in a significant ($p \leq 0.05$) increase in all of those parameters compared to the CCl_4 group. Also, significant increasing was showed in MDA and NO concentrations in the CCl_4 group compared to control and GAE groups. GAE intervention (300 mg/kg BW) to the rat groups resulted in a significant ($p \leq 0.05$) decreasing in MDA and NO concentration compared to the CCl_4 group. IP injection of CCl_4 led to increase oxidative stress markers, such as MDA and NO, and decrease GSH, GSSG, GSH-Px, SOD and CAT. Such data are supported by several studies [2, 16-18, 88, 89]. CCl_4 -induced liver damage came through metabolizes CCl_4 to many harmful free radicals which subsequently cause lipid peroxidation of membrane-bound fatty acids [90]. As a result of lipid peroxidation, harmful degraded products, namely MDA can be formed in cell membranes. With the same context, nitric oxide synthase catalyzes the conversion of L-arginine to citrulline and highly reactive free radical species, nitric oxide (NO) [91]. The elevation levels of MDA and NO return to the difficulty of glutamate transportation across the cell membrane, which initiates lipid peroxidation and alter the cell redox state leading to membrane damage [92]. The membrane damage due to cross linking of MDA with the membrane components leads to changes in its properties including inactivation of the enzymes and receptors, disturbance in membrane fluidity, cell injury and may cause the formation of atherosclerotic plaques [61, 62, 93-95]. Also, MDA exhibited mutagenic effect via reacting with nitrogenous bases in DNA [96]. Furthermore, NO can react with O_2 and H_2O to form nitrite (NO_2) and nitrate (NO_3); with the amino and thiol groups (-SH) of protein to produce nitrosylated species; with hemoglobin to form iron-nitrosyl adducts and NO_3 in blood; and with superoxide anion (O_2^-) to make NO_3 [90, 97]. Therefore, highly

significant decreasing rate on the formation of MDA and NO in liver as the result of GAE intervention proposed that liver prophylactic/curative effects may also be mediated by the radical-scavenging properties, and lipid peroxidation and nitric oxide synthase inhibition by GAE. With the same context, George, *et al.* [23] found that GAE intervention normalized the oxidant status of the liver cells due its antioxidant activity. Also, Baskar, *et al.* [98] reported that Graviola extract has a protective role against free radicals species, OH and H₂O₂. The protective roles of GAE due to the presence of bioactive compounds including alkaloids, polyphenols and acetogenins which leads to decrease the levels of lipid peroxidation and increase the levels of enzymatic and nonenzymatic antioxidants. Finally, the conversion of the majority of GSH in the liver to glutathione disulfide (GSSG) by the glutathione reductase enzyme to protect the liver cells from toxic material damage decreased the GSH level. GSH role in the CCl₄ detoxifications process represent the main function through as a key conjugate of xenobiotics electrophilic metabolites and as an important antioxidant [1, 53]. The antioxidant functions of GSH include serving as a nonenzymatic scavenger of oxyradicals and its role in the activities of the antioxidant enzymes system (glutathione peroxidase, GSH-Px and glutathione reductase, (GSH-Rd) [3, 18, 99]

3.6. Effect of Graviola Aquatic Extract (GAE) on Liver ROS and TNF- α Level of Hepatotoxic Rats Induced by CCl₄

Data in Table (6) indicated that ROS level was significant ($p \leq 0.05$) increasing in the CCl₄ group compared to the control and GAE groups. Also, the TNF- α level recorded the opposite direction. In addition, both GAE prophylactic/curative treatment groups showed a significant ($p \leq 0.05$) decrease and increase in ROS and TNF- α levels, respectively. Comparable research has examined biomarkers or end-products of free radical-mediated oxidative processes to identify oxidative stress associated with CCl₄ [2, 5, 16-18, 88, 89]. Thus, ROS is often utilized as a biomarker to provide an acceptable indication of oxidative stress state. Our findings revealed that the degree of oxidative stress in CCl₄ injected rats was reduced as a result of GAE-induced ROS decrease. Several previous studies has also shown a substantial correlation between ROS liver concentrations and the pathogenic phases of a number of illnesses, including liver diseases [1, 18, 76]. Maintaining an appropriate level of oxidative stress would be eased by the AEG-induced regulation of ROS levels throughout the body. In accordance with our data, Shukry, *et al.* [30] found that oxidative stress indices including ROS was enhanced in CCl₄-injected rats and that Graviola had an antioxidant and chemoprotective impact on the liver due to its high bioactive component content. On the other side, data of our findings indicated that GAE significantly ($p \leq 0.05$) decreased liver TNF- α levels which demonstrating that it can prevent tissue damage. With this context, Abd Elalal, *et al.* [18] reported the same behavior of TNF- α levels in liver with other plant parts applied and contain the same bioactive compounds found in GAE. Such role of GAE in suppression the TNF- α could be of a high degree of importance because it is a pro-inflammatory cytokine which plays an important role in initiating the tissue inflammatory reaction [100-102].

3.7. Effect of Graviola Aquatic Extract (GAE) on CCl₄-Induced Liver Cell Apoptosis

Data in Table (7) and Figure (1) are shown the effect of GAE on CCl₄-induced liver cell apoptosis. From such data it could be noticed that the apoptotic (Bax) proteins and caspase-3 levels of the CCl₄ group were significantly ($p \leq 0.05$) higher than the control and GAE groups. Besides, the GAE intervention by 300 mg/kg BW in both prophylactic and curative treatment groups resulted in a significant ($p \leq 0.05$) decrease in their expression levels compared to the CCl₄ group. Conversely, the GAE-treated groups showed normalization to antiapoptotic (Bcl-2) proteins level, which was significantly ($p \leq 0.05$) decreased by CCl₄ injection. This study shows that the injection of CCl₄ led to significant ($p \leq 0.05$) increases in caspase-3, and Bax proteins and a substantial reduction in Bcl-2 proteins. This was corresponding with Cai, *et al.* [103] and Lee, *et al.* [104] who explained that oxidative damage is one of the essential mechanisms of CCl₄ hepatotoxicity, which triggers apoptosis via the mitochondria-initiated pathway. This implies that CCl₄-induced Ca²⁺ influx and destruction of the inner mitochondrial membrane potential, leading to disorganized mitochondrial permeability of pores to markers of apoptosis. Also, DNA fragmentation results revealed apoptosis and necrosis following CCl₄ treatment. GAE was found to decrease the higher levels of Bax and caspase, and significantly ($p \leq 0.05$) increase Bcl2 in CCl₄-treated rats. This observation was in convenient with Mansour, *et al.* [105] who found that GAE induced the overexpression of Bcl-2, which prevents DNA fragmentation due to its antioxidant activities, blocks the cytochrome c release and mitochondrial permeability.

3.8. Effect of GAE on the Histopathological Alterations Induced by CCl₄ in Rat's Liver

Photomicrograph of the liver of the control and different treated groups of rats were shown in Figure 2. The control and GAE showed normal hepatocytes arranged in cords around the central vein and normal histological structure of hepatic lobule. CCl₄ treated group showed hepatocellular vacuolar degeneration (steatosis), congestion of hepatic sinusoids, hyperplasia of biliary epithelium and fibroplasia in the portal triad, and focal hepatocellular necrosis and a loss of cellular details. The CCl₄ + GAE group showed slightly of necrosis of sporadic hepatocytes. In GAE + CCl₄ group, slight Kupffer cells activation, only change was observed. Such observations were similar to the study of Elhassaneen, *et al.* [17] who reported that CCl₄ induced several histopathological alterations in rats including focal hepatocellular necrosis associated with inflammatory cells infiltration, congestion of hepatic sinusoids, marked fibroplasia in the portal triad, appearance of newly formed bile ductules and portal infiltration with inflammatory cells. Also, Badawy [106] liver of rats treated with CCl₄ revealed steatosis of hepatocytes, hyperplasia of biliary epithelium and focal hepatocellular necrosis associated with mononuclear inflammatory cells infiltration. Furthermore, Ding, *et al.* [107] mention that liver fibrosis induced by injecting CCl₄ IP in rats for eight

weeks and observed that disruption of tissue architecture, large fibrous septa formation, pseudolobe separation and collagen accumulation. These changes were accompanied by increase of the levels of ALT and AST, while albumin was decreased significantly. On the other study, Ahmed, *et al.* [108] mentioned that CCl₄ induced histopathological changes by includes regenerative nodules, deteriorated parenchyma, and the lobules were infiltrated with fat and structurally altered. Such changes were accompanied by increased serum liver enzymes ALT, AST, and ALP, lactate dehydrogenase, level of nitric oxide, tumor necrosis factor alpha (TNF α) and liver malondialdehyde content, collagen fiber percent and decreased liver reduced glutathione content as endogenous antioxidant. Finally, Elhassaneen, *et al.* [53] reported that rats treated with CCl₄ showed congestion of central vein and cytoplasm vacuolization of hepatocytes. Also, feeding on diet containing Cape Gooseberry fruits and Mulberry leaves powder showed Kupffer cells activation and slight hydropic degeneration of some hepatocytes. Such histopathological changes were confirmed by the biochemical results.

Abbreviations

Alb, albumin; ALP, alkaline phosphatase; ALT, alanine aminotransferase; AST, aspartate aminotransferase; Bax, B-cell lymphoma 2 (Bcl-2)-like protein 4, Bcl-2, B-cell lymphoma 2, BWG, body weight gain; CCl₄, carbon tetrachloride; FER, feed efficiency ratio; FI, feed intake; GAE, Graviola aqueous extract, GSH, reduced glutathione; GSSG, oxidized glutathione; GSH-Rd, glutathione reductase; GSH-Px, glutathione peroxidase; Hb, hemoglobin; IP, intraperitoneal (IP), HDL-c, high density lipoprotein cholesterol, LDL-c, low density lipoprotein cholesterol, MDA, malondialdehyde; NO, nitric oxide; RBCs, red blood cells; ROS, reactive oxygen species; OS, oxidative stress, TBA, thiobarbituric acid; TNF- α , tumor necrosis factor-alpha; TB, total bilirubin, TC, total cholesterol (TC), TG, triglycerides; WBCs, white blood cells

Author's Contributions

All authors contributed equally to the activities/components of this study, which include collecting the information, designing experiments, conducting biological experiments and laboratory analyses, preparing results and statistically analyzing, tabulating the results and adding figures, and writing the first draft of the manuscript. Professor Yousif also restructured the first draft of the manuscript, reviewing it in terms of intellectual content and coordinated the study. All authors edited and reviewed the various versions of the manuscript and approved the final version for submission for publication.

Competing Interest

The authors, Yousif A. Elhassaneen, Seham A. Khader and Mohammed A. El-aslowty state that they have complied with all ethical requirements during the preparation of this manuscript and declare that they have no potential conflict of interest.

References

- [1] Elhassaneen, Y., 1996. *Chemical and technological studies on the pollution of environment with pesticides and polycyclic aromatic hydrocarbons. Ph.D. Thesis.* Mansoura, Egypt: Faculty of Agriculture, Mansoura University.
- [2] Elhassaneen, Y., Abd El-Rahman, A., and El-Samouny, S., 2021-a. "Potential protective effects of cauliflower leaves and prickly pear fruits skin on liver disorders induced by carbon tetrachloride in rats." *Journal of Home Economics*, vol. 32, pp. 19-42.
- [3] El-Sayed, M., El-Sherif, F., Elhassaneen, Y., and Elbanna, S., 2013. "Phytochemicals in artichoke (*Cynara scolymus* L.) and their effects on liver damage initiation by carbon tetrachloride." *Journal of Home Economics*, vol. 23, pp. 89-103. Available: <https://mkas.journals.ekb.eg/?lang=en>
- [4] Kebamo, S., Shibiru, T., and Bekesho, G., 2015. "The role of biotransformation in drug discovery and development." *J. Drug MetabToxicol.*, vol. 5, pp. 1-13.
- [5] Sayed-Ahmed, S., Shehata, N., and Elhassaneen, Y., 2020. "Potential protective effects of ganoderma lucidum powder against carbon tetrachloride induced liver disorders in rats: Biological, biochemical and immunological studies, egypt." *Bulletin of the National Nutrition Institute of the Arab Republic of Egypt*, vol. 56, pp. 99-132.
- [6] Yu, G., Nizhenkovska, I. V., and Korda, M. M., 2020. *Biological and bioorganic chemistry": In 2 books. Book 2. Biological chemistry; edited by yu.Gubsky, i.V.Nizhenkovska.* Kyiv: AUS Medicine Publishing, AUS. p. 544.
- [7] Lawrence, S. F. and Emmet, B. K., 2012. *Handbook of liver disease.* 3rd ed. Philadelphia, PA: Elsevier Saunders.
- [8] Asrani, S. K., Devarbhavi, H., Eaton, J., and Kamath, P. S., 2019. "Burden of liver diseases in the world." *J. Hepatol.*, vol. 70, pp. 151-171.
- [9] Krishnan's, S., 2019. "Liver disease- an overview." *World J. of Pharmacy and Pharmaceutical Sciences*, vol. 8, pp. 1385-1395.
- [10] Martin, L. M., Sheridan, M. J., and Younossi, Z. M., 2002. "The impact of liver disease on health-related quality of life: A review of the literature." *Curr. Gastroenterol Rep.*, vol. 4, pp. 79–83.

- [11] Badawy, R., 2017. *The effect of phytochemical extracts of some plant parts in liver cancer initiation induced by benzo(a)pyrene*. Ph.D. Thesis in nutrition and farhood science. Egypt: Faculty of Home Economics, Minoufiya University.
- [12] Elhassaneen, Y., Hassab, El-Nabi, S., Mahran, M., Bayomi, A., and Badwy, E., 2022. "Potential protective effects of strawberry (*fragaria ananassa*) leaves against alloxan induced type 2 diabetes in rats: Molecular, biological and biochemical studies." *Sumerianz Journal of Biotechnology*, vol. 5, pp. 1-15. Available: <https://doi.org/10.47752/sjb.51.1.15>
- [13] Mahran, M., Elbassyouny, G., and Elhassaneen, Y., 2018. "Preventive effects of onion skin powder against hepatotoxicity in rats treated with benzo(a)pyrene." In *Proceeding of the Annual Conference (13th Arab; 10th International), 11-12 April, Faculty of Specific Education, Mansoura University, "Higher Education in Egypt and the Arab World in the Light of Sustainable Development Strategies"*, Mansoura, Egypt.
- [14] Petrovska, B. B., 2012. "Historical review of medicinal plants' usage." *Pharmacognosy Review*, vol. 6, pp. 1-5.
- [15] World Health Organization WHO, 2013. *Traditional medicine strategy: 2014-2023*. Italy: World Health Organization; Rome.
- [16] Elhassaneen, Y., El-Dashlouty, M., El-Eskafy, A., and El-Gamal, N., 2016-b. "The potential protection effects of cape gooseberry (*physalis peruviana* l.) feeding against ccl4-induced hepatotoxicity in rats." *Research Journal of Medicine and Medical Sciences*, vol. 11, pp. 1-13. Available: <http://arnewsmb.com/RJMMS/>
- [17] Elhassaneen, Y., Abd El-Rahman, A., and El-Samouny, S., 2021-c. "Potential protective effects of cauliflower leaves and prickly pear fruits skin on liver disorders induced by carbon tetrachloride in rats." *Journal of Home Economics*, vol. 32, pp. 19-42.
- [18] Abd Elalal, N., Elsemelawy, S., and Elhassaneen, Y., 2022. "Potential effects of wild milk thistle (*silybum marianum* l.) seed extract intervention on oxidative stress induced by busulfan drug in different organs of rats." *International Journal of Healthcare and Medical Sciences*, vol. 8, pp. 19-34.
- [19] Coria-Tellez, A., Efigenia, M., Elhadi, M., and Obledo-Vazquez, E., 2018. "Annona muricata: A comprehensive review on its traditional medicinal uses, phytochemicals, pharmacological activities, mechanisms of action and toxicity." *Arabian Journal of Chemistry*, vol. 11, pp. 662–691.
- [20] Oviedo, V., Garcí'a, M., Dí'az, C., Marder, M., Costa, M., Rincon, J., and Safnchez, C., 2009. "Extracto y fraccion alcaloidal de Annona muricata con actividad de tipo ansiolítica en ratones." *Rev. Colomb. Cienc. Quím. Farma.*, vol. 38, pp. 105–120.
- [21] Matsushige, A., Matsunami, K., Kotake, Y., Otsuka, H., and Ohta, S., 2012. "Three new megastigmanes from the leaves of Annona muricata." *Journal of natural medicines*, vol. 66, pp. 284-291.
- [22] Torres, M. P., Rachagani, S., Purohit, V., Pandey, P., Joshi, S., Moore, E. D., and Batra, S. K., 2012. "Graviola: a novel promising natural-derived drug that inhibits tumorigenicity and metastasis of pancreatic cancer cells in vitro and in vivo through altering cell metabolism." *Cancer letters*, vol. 323, pp. 29-40.
- [23] George, V. C., Kumar, D. R., Suresh, P. K., and Kumar, R. A., 2014. "Antioxidant, DNA protective efficacy and HPLC analysis of Annona muricata (*soursop*) extracts." *J. Food Sci. Technol.*, vol. 52, pp. 2328–2335.
- [24] Hasrat, J. A., De Bruyne, T., DE BACKER, J. P., Vauquelin, G., and Vlietinck, A. J., 1997. "Isoquinoline derivatives isolated from the fruit of Annona muricata as 5-HTergic 5-HT1A receptor agonists in rats: unexploited antidepressive (lead) products." *Journal of Pharmacy and Pharmacology*, vol. 49, pp. 1145-1149.
- [25] Li, C. M., Tan, N., Zheng, H. L., Mu, Q., Hao, X. J., He, Y. N., and Zou, J., 1998. "Cyclopeptide from the seeds of annona muricata." *Phytochemistry*, vol. 48, pp. 555–556.
- [26] Chang, F. R. and Wu, Y. C., 2001. "Novel cytotoxic Annonaceous acetogenins from Annona muricata." *J. Nat. Prod.*, vol. 64, pp. 925–931.
- [27] National Research Council NRC, 1996. *Guide for the care and use of laboratory animals*. Washington, DC: National Academy Press.
- [28] Reeves, P., Nielsen, F., and Fahey, G., 1993. "AIN-93 purified diets for laboratory rodents: Final report of the american institute of nutrition ad hoc writing committee on the reformulation of the ain-76a rodent diet." *Journal of Nutrition*, vol. 123, pp. 1939-1951.
- [29] Jayasekhar, P., Mohan, P. V., and Rahinam, K., 1997. "Hepatoprotective activity of ethylacetate extract of Acacia catechu." *Indian. J. of Pharmacology*, vol. 29, pp. 426-428.
- [30] Shukry, M., El-Shehawi, A. M., El-Kholy, W. M., Elsisy, R. A., Hamoda, H. S., Tohamy, H. G., Abumandour, M. M., and Farrag, F. A., 2020. "Ameliorative effect of graviola (*annona muricata*) on mono sodium glutamate-induced hepatic injury in rats: Antioxidant, apoptotic, anti-inflammatory, lipogenesis markers, and histopathological studies." *Animals*, vol. 10, pp. 1-19.
- [31] Drury, R. A. and Wallington, E. A., 1980. *Carlton's histological technique*. 5th ed. Oxford University.
- [32] Stroev and Makarova, 1989. *Textbook of clinical chemistry*, Carl A. Burtis. 3rd ed. Philadelphia, USA: WB Saunders.
- [33] Lowry, O. H., Rosebrough, N. J., Farr, A. L., and Randall, R. J., 1951. "Protein measurement with the folin phenol reagent." *Journal of Biological Chemistry*, vol. 193, pp. 265-275.
- [34] Tietz, N. W., 1976. *Fundamental of clinical chemistry*. Philadelphia: W.B. Saunders. p. 243.

- [35] Vassault, A., Grafmeyer, D., Graeve, J., Cohen, R., Beaudonnet, A., and Bienvenu, J., 1999. "Quality specifications and allowable standards for validation of methods used in clinical biochemistry." *Ann. Biol. Clin. (Paris)*, vol. 57, pp. 685-95.
- [36] David, R., Ingennitoef, E., and Reynolds, W., 1954. "The determination of albumin in human blood plasma and serum; a method based on the interaction of albumin with an anionic dye-2(4'-hydroxybenzeneazo) benzoic acid." *J. Clin. Invest.*, vol. 33, pp. 211-221.
- [37] Kaplan, S. L., Mason, E. O. J., Mason, S. K., Catlin, F. I., Lee, R. T., Murphy, M., and Feigin, R. D., 1984. "Prospective Haemophilus influenzae type b meningitis in children." *J. Pediatr.*, vol. 104, pp. 447-453.
- [38] Fossati, P. and Prencipe, L., 1982. "Serum triglycerides determined colorimetrically with an enzyme that produces hydrogen peroxide." *Clin. Chem.*, vol. 28, pp. 2077-2080.
- [39] Lopes-Virella, M. F., Stone, P., Ellis, S., and Colwell, J. A., 1977. "Cholesterol determination in high-density lipoproteins separated by three different methods." *Clin. Chem.*, vol. 23, pp. 882-884.
- [40] Ahmadi, S. A., Boroumand, M., Gohari-Moghaddam, K., Tajik, P., and Dibaj, S., 2008. "The impact of low serum triglyceride on LDL-cholesterol estimation." *Arch. Iran. Med.*, vol. 11, pp. 318-321.
- [41] Tavakkol, A., Ghomian, N., Shameli, A., Shakeri, M. T., Fahmidehkar, M. A., Mahajer, E., Khoshnavaz, R., and Emadzadeh, M., 2005. "Determination of Interleukin-6 and Tumor Necrosis Factor-alpha concentrations in Iranian-Khorasanian patients with preeclampsia." *BMC Pregnancy Childbirth*, vol. 5, p. 14.
- [42] Alisik, M., Neselioglu, S., and Erel, O., 2019. "A colorimetric method to measure oxidized, reduced and total glutathione levels in erythrocytes." *Journal of Laboratory Medicine*, vol. 43, pp. 269-277.
- [43] Splittgerber, A. G. and Tappel, A. L., 1979. "Inhibition of glutathione peroxidase by cadmium and other metal ions." *Arch Biochem Biophys*, vol. 197, pp. 534-42.
- [44] Aebi, H., 1974. *Catalase*. In: *Bergmeyer hu. Ed. Methods of enzymatic analysis*. New York, London: Academic Press. pp. 673-677.
- [45] Mett, J. and Müller, U., 2021. "The medium-chain fatty acid decanoic acid reduces oxidative stress levels in neuroblastoma cells." *Sci. Rep.*, vol. 11-17, p. 6135.
- [46] International Committee for Standardization in Haematology ICSH, 1979. "Recommended methods for red cell enzyme analysis." *British Journal of Haematology*, vol. 35, pp. 331 - 340.
- [47] Montgomery, H. and Dymock, J. F., 1961. *Determination of nitrite in water* vol. 86. Cambs, UK: Royal Soc Chemistry Thomas Graham House. p. 414.
- [48] Buege, J. A. and Aust, S. D., 1978. *Microsomal lipid peroxidation* in Packer L., (ed), *Methods in enzymology* vol. 52. New York, NY: Academic. pp. 302-310.
- [49] Erel, O. A., 2005. "New automated colorimetric method for measuring total oxidant status." *Clin. Biochem.*, vol. 38, pp. 1103-11.
- [50] Gong, J., Qian, L., Kong, X., Yang, R., Zhou, L., Sheng, Y., Sun, W., Sun, F., Huang, Y., et al., 2007. "Cardiomyocyte apoptosis in the right auricle of patients with ostium secundum atrial septal defect diseases." *Life Sci.*, vol. 80, pp. 1143-1151.
- [51] Drury, R. A., Wallington, E., Cancerson, R., and Carlton's, 1976. *Histopathological techniques*. 4th ed. Oxford/London, UK: Oxford University Press.
- [52] El-Sayed, M., El- Sherif, F., Elhassaneen, Y., and Abd El-Rahman, A., 2012. "Potential therapeutic effects of some egyptian plant parts on hepatic toxicity induced by carbon tetrachloride in rats." *Life Sci. J.*, vol. 9, pp. 3747-3755. Available: <http://www.lifesciencesite.com/556>
- [53] Elhassaneen, Y., Ragab, S., Khater, O., and Fati, G., 2016-a. "Functional foods extracts applied in breads ameliorate liver disorders induced by CCl4 in rats." *Journal of Home Economics*, vol. 26, pp. 31-49. Available: <https://mkas.journals.ekb.eg/?lang=en>
- [54] Hamzawy, M. A., El-Denshary, E. S., Mannaa, F. A., and Abdel-Wahhab, M. A., 2013. "Dietary supplementation of calendula officinalis counteracts the oxidative stress and liver damage resulted from aflatoxin." *ISRN Nutrition*, vol. 9, pp. 5402-538427.
- [55] Abd El-Rahman, A., 2013. *Effects of some egyptian plant herbs on hypercholestermic rats treated with carbon tetrachloride* ph.D. Thesis in nutrition and food science. Egypt: Faculty of Home Economics, Minoufiya University.
- [56] Morresion, G. and Hark, L., 1999. *Medical nutrition and disease*. 2nd ed. Black Well Science, Inc.
- [57] Dickerson, J. W. and Lee, H. A., 1988. *Nutrition in the clinical mangement of disease*. 2nd ed. Edward Arnold.
- [58] Chokshi, D., 2007. "Subchronic oral toxicity of a standardized white kidney bean (*Phaseolus vulgaris*) extract in rats." *Food Chem. Toxicol.*, vol. 45, pp. 32-40.
- [59] Arthur, F., Woode, E., Terlabi, E., and Larbie, C., 2011. "Evaluation of acute and subchronic toxicity of Annona muricata (Linn.) aqueous extract in animals." *Eur. J. Exp. Biol.*, vol. 1, pp. 115-124.
- [60] El-Banaa, S., 2014. *Phytochemicals in Artichoke (Cynara scolymus,L.) and their effects on liver cancer induced by carbon tetrachloride, CCl4*" M.Sc. Thesis in Nutrition and Food Science. Egypt: Faculty of Home, Minoufiya University.
- [61] Mansour, Z., 2017. *Hepatoprotective activity and antioxidant effects of avocado (Persea americana) fruits on rat's hepatotoxicity induced by carbon tetrachloride*". M.Sc. Thesis in Nutrition and Food Science. Egypt: Faculty of Home Economics, Minoufiya University.

- [62] Tagoon, S. R., 2019. *Hepatoprotective effect of apricot and plum kernel on carbon tetrachloride induced hepatic rats. M.Sc. Thesis in nutrition and food science.* Egypt: Faculty of Home Economics, Minoufiya University.
- [63] ElSamouny, S. H., 2021. *Potential protective effects of food industries by-products against liver disorders induced by carbon tetrachloride. Ph.D. Thesis in Nutrition and Food Science.* Egypt: Faculty of Home Economics, Minoufiya University, Shebin El-Kom.
- [64] Jirova, D., Sperlingova, I., Halaskova, M., Bendova, H., and Dabrowska, L., 1996. "Immunotoxic effects of carbon tetrachloride-the effect on morphology and function of the immune system in mice." *Genet. Eur. J. Public Health*, vol. 4, pp. 16-20.
- [65] Mandal, A., Karmakar, R., Bandyopadhyay, S., and Chatterjee, M., 1998. "Antihepatotoxic potential of trianthena portulacastrum in carbon tetrachloride-induced chronic hepatocellular injury biochemical characteristics." *Arch. Pharm. Res.*, vol. 21, pp. 223-230.
- [66] Ballinger, A., 2007. "Gastroenterology and anemia." *Medicine*, vol. 35, pp. 142- 146.
- [67] Tung, H. T., Cook, F. W., Wyatt, R. D., and Hamilton, P. B., 1975. "The anemia caused by aflatoxin." *Poult. Sci.*, vol. 54, pp. 1962-1969.
- [68] Konopacka, M., Maria, W., and Joanna, R., 1998. "Modifying effect of vitamins C, E and beta-carotene against gamma-ray-induced DNA damage in mouse cells." *Mutation Research*, vol. 417, pp. 85-94.
- [69] Antunes, L. M. and Takahashi, C. S., 1999. "Protection and induction of chromosomal damage by vitamin C in human lymphocyte cultures." *Teratog Carcinog Mutagen*, vol. 9, pp. 53-9.
- [70] Susilo, R. J., Winarni, D., Husen, S. A., Hayaza, S., Punnapayak, H., Wahyuningsih, S. P., Sajidah, E. S., and Darmanto, W., 2019. "Hepatoprotective effect of crude polysaccharides extracted from *Ganoderma lucidum* against carbon tetrachloride-induced liver injury in mice." *Veterinary World*, vol. 12, pp. 1987-1991.
- [71] Pagana, K. D. and Pagana, T. J., 1997. *Mosby's diagnostic and laboratory test references.* 3rd ed. New York: Mosby-year Book, Inc.
- [72] Sayed, A. S., 2016. *Nutritional and technological studies on the effect of phytochemicals on obesity injuries and their related diseases by using experimental animals". Ph.D. Thesis in Home Economics (Nutrition and Food Science).* Egypt: Faculty of Specific Education, Port Said University.
- [73] Fati, G., 2017. *The effect of some bakery products fortified with functional food consumption on rats suffered from liver cancer. Ph.D. Thesis in Nutrition and Food Science.* Egypt: Faculty of Home Economics, Minoufiya University.
- [74] Arthur, F. K., Woode, E., Terlabi, E., and Larbie, C., 2012b. "Evaluation of hepatoprotective effect of aqueous extract of *Annona muricata* (Linn.) leaf against carbon tetrachloride and acetaminophen-induced liver damage." *J. Nat. Pharm.*, vol. 3, pp. 25-30.
- [75] Elhassaneen, Y., Ghamry, H., and Lotfy, L., 2018. "Potential chemoprevention of liver disorders by dietary curcumin in rats treated with benzo(a)pyrene." In *Proceeding of the 1st Scientific International Conference of the Faculty of Specific Education, Minia University, Specific Education, innovation and labor market" 16-17 Juli, 2018, Minia, Egypt.*
- [76] Elhassaneen, Y., Ragab, S., Thoraya, M., Azza, E., and Abeer, A., 2012. "Effect of sweet violet (*viola odorata* l.) blossoms powder on liver and kidney functions as well as serum lipid peroxidation of rats treated with carbon tetrachloride." *The Journal of American Science*, vol. 9, pp. 88-95.
- [77] Koneri, R., Balaraman, R., and Firdous-Vinoth, K. M., 2008. "Hepatoprotective effects of *Momordica cymbalaria* fenzl. Against carbon tetrachloride induced hepatic injury in rats." *Pharmacol.*, vol. 1, pp. 365-74.
- [78] Gutteridge, J. M. and Wilkins, S., 1983. "Copper salt-dependant hydroxyl radical formation. Damage to proteins acting as antioxidant." *Biochim Biophys Acta*, vol. 759, pp. 38-14.
- [79] Farrugia, A., 2010. "Albumin usage in clinical medicine: tradition or therapeutic?" *Transfusion Medicine Reviews.*, vol. 24, pp. 53-63.
- [80] Adewole, S. and Ojewole, J., 2010. "Protective effects of *Annona muricata* linn. (Annonaceae) leaf aqueous extract on serum lipid profiles and oxidative stress in hepatocytes of streptozotocin-treated diabetic rats." *Afr. J. Tradit. Complement Altern. Med.*, vol. 6, pp. 6-13.
- [81] Usunobun, U., Okolie, P., and Eze, G., 2015. "Modulatory effect of ethanolic leaf extract of *Annona muricata* pre-treatment on liver damage induced by Dimethylnitrosamine (DMN) in rats." *Br. J. Pharm. Res.*, vol. 8, pp. 1-9.
- [82] McAnlis, G. T., McEneny, J., Pearce, J., and Young, I. S., 1999. "Absorption and antioxidant effects of quercetin from onions, in man." *Eur. J. Clin. Nutr.*, vol. 53, pp. 92-96.
- [83] Kuhlmann, M., Burkhardt, G., Horsch, E., Wagner, M., and Kohler, H., 1998. "Inhibition of oxidant-induced lipid peroxidation in cultured renal tubular epithelial cells by quercetin." *Free Rad. Res.*, vol. 29, pp. 451-460.
- [84] Poma, E., Requis, E. R., Gordillo, G., and Fuertes, C., 2011. "Estudio fitoquímico y actividad antiinflamatoria de la *Annona muricata* L. (*guana' bana*) de Cuzco." *Ciencia e Investigacion*, vol. 14, pp. 29-33.
- [85] Correa-Gordillo, J., Ortiz, J., Sánchez-Mejía, M., and Pachón, H., 2012. "Actividad antioxidante en *guana' bana* (*Annona muricata* L.) una revisión bibliográfica. Bol. Latinoam." *Caribe Plant. Med. Aromat.*, vol. 11, pp. 111-126.

- [86] Kaneko, T., Kajji, K., and Matsuo, M., 1994. "Protection of linoleic acid hydroperoxide-induced cytotoxicity by phenolic antioxidants." *Free Radical Biol. Med.*, vol. 16, pp. 405-409.
- [87] Aviram, M., Rosenblat, M., Billecke, S., Eroglu, J., Sorenson, R., Bisgaier, C., Newton, R., and La Du, B., 1999. "Human serum paraoxonase is inactivated by oxidized low density lipoprotein and preserved by antioxidants." *Free Radical Biology and Medicine*, vol. 26, pp. 892-904.
- [88] Elhassaneen, Y., Badran, H., A., A. E.-R., and Badawy, N., 2021-b. "Potential effect of milk thistle on liver disorders induced by carbon tetrachloride." *Journal of Home Economics*, vol. 31, pp. 83-93.
- [89] Elhassaneen, Y., Ragab, S., and Saleh, A., 2016-c. "Effect of selected plant parts extracts on liver injuries induced by ccl4 in vitro." *Pyrex Journal of Medicinal Plant Research*, vol. 2, pp. 8-20. Available: <http://pyrexjournals.org/pjmpr/abstract/2016/july/Elhassaneen-et-al.php>
- [90] Cheeseman, K. H. and Salter, T. F., 1993. "An introduction to free radical biochemistry." *Br. Med. Bull.*, vol. 49, pp. 481-93.
- [91] Manahan, S. E., 1989. *Toxicological chemistry: A guide to toxic substances in chemistry*. NY: PCR press.
- [92] Asl, N. A., Banaei, S., Alihemmati, A., Baradaran, B., and Azimian, E., 2013. "The anti-inflammatory effect of erythropoietin and melatonin on renal ischemia reperfusion injury in male rats." *Adv. Pharm. Bull.*, vol. 4, pp. 49-54.
- [93] Elhassaneen, Y., 2004. "The effect of charcoal broiled meat consumption on antioxidant defence system of erythrocytes and antioxidant vitamins in plasma." *Nutrition Research*, vol. 24, pp. 435 - 446.
- [94] Elhassaneen, Y. and El-Badawy, A., 2013. "Influence of charcoal broiled meat consumption on the liver functions and non-enzymatic antioxidants in human blood." *Food and Nutrition Sciences*, vol. 4, pp. 90-99.
- [95] Kris-Etherton, P. M., Pearson, T. A., Wan, Y., Hargrove, R. L., Moriarty, K., Fishell, and Etherton, T. D., 1999. "High-monounsaturated fatty acid diets lower both plasma cholesterol and triacylglycerol concentrations." *Am. J. Clin. Nutr.*, vol. 70, pp. 1009-10015.
- [96] Cline, S., James, N. R., Silvia, T., Lawrence, J., and Philip, C., 2004. "Malondialdehyde adducts in DNA arrest transcription by T7 RNA polymerase and mammalian RNA polymerase II." *PNAS*, vol. 101, pp. 7275-7280.
- [97] Misko, T., Schilling, R., Salvemini, D., Moore, W., and Currie, M., 1993. "A Fluorometric assay for the measurement of nitrite in Biological samples." *Analytical Biochemistry*, vol. 214, pp. 11-16.
- [98] Baskar, R., Rajeswari, V., and Kumar, T. S., 2007. "In vitro antioxidant studies in leaves of Annona species." *Indian J. Exp. Biol.*, vol. 45, pp. 480-485.
- [99] Almaadawy, A., Arafa, R., and Elhassaneen, Y., 2016. "Oxidative Stress and antioxidant defense systems status in obese rats feeding some selected food processing by-products applied in bread." *Journal of Home Economics*, vol. 26, pp. 1-37.
- [100] Bentrem, D. J. and Joehl, R. J., 2003. "Pancreas: healing response in critical illness." *Crit Care Med.*, vol. 31, pp. 582-589.
- [101] Ferrero-Miliani, L., Nielsen, O. H., Andersen, P. S., Girardin, S. E., and Nielsen, A. G., 2007. "Chronic inflammation: importance of NOD2 and NALP3 in interleukin-1beta generation." *Clin. Exp. Immunol.*, vol. 147, pp. 227-35.
- [102] Kim, G. Y., Roh, S. I., and Park, S. K., 2003. "Alleviation of experimental septic shock in mice by acidic polysaccharide isolated from the medicinal mushroom phellinus linteus." *Biol. Pharm. Bull.*, vol. 26, pp. 1418-1423.
- [103] Cai, Y., Gong, L. K., Qi, X. M., Li, X. H., and Ren, J., 2005. "Apoptosis initiated by carbon tetrachloride in mitochondria of rat primary cultured hepatocytes." *Acta Pharmacol Sin*, vol. 26, pp. 969-975.
- [104] Lee, T. Y., Chang, H. H., Wang, G. J., Chiu, J. H., Yang, Y. Y., and Lin, H. C., 2006. "Water-soluble extract of Salvia miltiorrhiza ameliorates carbon tetrachloride-mediated hepatic apoptosis in rats." *Le. J. Pharm. Pharmacol.*, vol. 58, pp. 659-65.
- [105] Mansour, H. H., Elkady, A. A., Elrefaei, A. H., and Hafez, H. F., 2018. "Radioprotective, antioxidant and antitumor e_cacy of annona muricata l. Leaf extract." *IJBB*, vol. 55, pp. 205-214.
- [106] Badawy, N., 2021. *Antioxidant activities of milk thistle (silybum marinum) and its effects on liver disorders induced by carbontetrachloride*. Msc. Thesis in nutrition and food science. Egypt: Faculty of Home Economics, Minoufiya University, Shebin El-Kom.
- [107] Ding, J., Yu, J., Wang, C., Hu, W., Li, D., Luo, Y., Luo, H., and Yu, H., 2005. "Ginkgo biloba extract alleviates liver fibrosis induced by CCl4 in rats." *Liver International*, vol. 25, pp. 1224-1232.
- [108] Ahmed, A., Mahmoud, M., Ouf, M., and El-Fathaah, E., 2011. "Aminoguanidine potentiates the hepatoprotective effect of silymarin in CCl4 treated rats." *Analysis of Hepatology*, vol. 10, pp. 207-215.

Table-1. Effect of Gravidloa aquatic extract (GAE) on BWG, FI and FER of hepatotoxic rats induced by CCl₄

Parameters	Control	GAE	CCl ₄	CCl ₄ +GAE	GAE+CCl ₄
BWG (%)	0.88 ± 0.06 ^a	0.91 ± 0.07 ^a	0.48 ± 0.03 ^d	0.69 ± 0.02 ^c	0.78 ± 0.03 ^b
FI (g/day/rat)	11.51 ± 0.54 ^a	11.73 ± 0.61 ^a	7.79 ± 0.48 ^c	9.47 ± 0.89 ^b	10.01 ± 0.91 ^b
FER	0.069 ± 0.004 ^a	0.071 ± 0.003 ^a	0.049 ± 0.002 ^c	0.061 ± 0.005 ^b	0.063 ± 0.004 ^b

Each value represents the mean of six rats ±SD. Means with different superscript letters in the same row indicate significant differences at $p \leq 0.05$. BWG, body weight gain, FI, feed intake; FER, feed efficiency ratio.

Table-2. Effect of Gravidola aquatic extract (GAE) on the hematological parameters of hepatotoxic rats induced by CCl₄

Parameters	Control	GAE	CCl ₄	CCl ₄ +GAE	GAE+CCl ₄
Hb (g/L)	156.78 ± 2.56 ^a	157.35 ± 3.77 ^a	79.14 ± 2.96 ^d	99.56 ± 3.56 ^c	111.32 ± 4.56 ^b
RBCs (10 ¹² /L)	9.32 ± 0.56 ^a	9.34 ± 0.85 ^a	3.84 ± 0.77 ^c	5.84 ± 0.63 ^b	5.91 ± 0.75 ^b
WBCs (10 ⁹ /L)	10.01 ± 1.02 ^a	10.12 ± 0.98 ^a	5.13 ± 0.81 ^c	6.92 ± 0.84 ^b	6.97 ± 0.84 ^b
Platelets (10 ⁹ /L)	762.43 ± 29.56 ^b	771.52 ± 30.25 ^a	261.81 ± 12.43 ^e	391.67 ± 22.75 ^d	401.53 ± 23.89 ^c
Neutrophil (%)	18.32 ± 1.23 ^a	18.31 ± 0.87 ^a	6.82 ± 0.69 ^c	15.73 ± 0.65 ^b	16.01 ± 0.99 ^b
Lymphocyte (%)	74.67 ± 3.98 ^a	74.86 ± 2.31 ^a	59.92 ± 0.88 ^c	66.09 ± 3.07 ^b	65.98 ± 4.06 ^b

Each value represents the mean of six rats ±SD. Means with different superscript letters in the same row indicate significant differences at $p \leq 0.05$. Hb, hemoglobin; RBCs, red blood cells; WBCs, white blood cells.

Table-3. Effect of Gravidola aquatic extract (GAE) on liver function parameters of hepatotoxic rats induced by CCl₄

Parameters	Control	GAE	CCl ₄	CCl ₄ +GAE	GAE+CCl ₄
AST (U/L)	50.32 ± 3.21 ^c	50.02 ± 2.65 ^c	98.27 ± 5.21 ^a	76.32 ± 4.11 ^b	69.15 ± 3.71 ^b
ALT (U/L)	28.94 ± 2.56 ^d	26.45 ± 1.98 ^d	67.83 ± 3.08 ^a	42.52 ± 3.17 ^b	37.45 ± 2.87 ^c
ALP (U/L)	108.77 ± 9.17 ^d	104.65 ± 8.21 ^d	276.56 ± 11.31 ^a	187.64 ± 7.59 ^b	171.88 ± 10.56 ^c
Alb (g/L)	36.14 ± 2.17 ^a	37.04 ± 3.98 ^a	18.37 ± 2.97 ^d	28.52 ± 2.18 ^c	30.54 ± 3.10 ^b
TB (mmol/L)	6.69 ± 0.87 ^c	6.49 ± 0.98 ^c	22.78 ± 2.67 ^a	15.38 ± 0.84 ^b	14.71 ± 0.91 ^b

Each value represents the mean of six rats ±SD. Means with different superscript letters in the same row indicate significant differences at $p \leq 0.05$. AST, aspartate aminotransferase; ALT, alanine aminotransferase. ALP, alkaline phosphatase; Alb, albumin, TB, serum total bilirubin.

Table-4. Effect of Gravidola aquatic extract (GAE) on serum lipid profile parameters of hepatotoxic rats induced by CCl₄

Parameters	Control	GAE	CCl ₄	CCl ₄ +GAE	GAE+CCl ₄
TG (mmol/L)	1.14 ± 0.10 ^c	1.14 ± 0.09 ^c	1.51 ± 0.13 ^a	1.38 ± 0.08 ^b	1.33 ± 0.03 ^b
TC (mol/L)	2.91 ± 0.09 ^c	2.81 ± 0.05 ^c	3.44 ± 0.11 ^a	3.16 ± 0.04 ^b	3.12 ± 0.06 ^b
HDL-c (mmol/L)	1.41 ± 0.03 ^a	1.45 ± 0.06 ^a	0.72 ± 0.04 ^c	0.99 ± 0.02 ^b	1.08 ± 0.03 ^b
LDL-c (mmol/L)	0.91 ± 0.02 ^c	0.90 ± 0.03 ^c	2.03 ± 0.01 ^a	1.64 ± 0.04 ^b	1.54 ± 0.04 ^b

Each value represents the mean of six rats ±SD. Means with different superscript letters in the same row indicate significant differences at $p \leq 0.05$. TG, triglycerides, TC; total cholesterol; HDL-C, high-density lipoproteins; LDL-C, low-density lipoproteins.

Table-5. Effect of Gravidola aquatic extract (GAE) on liver oxidative status parameters of hepatotoxic rats induced by CCl₄

Parameters	Control	GAE	CCl ₄	CCl ₄ +GAE	GAE+CCl ₄
Antioxidants					
GSH (mmol/g)	6.01 ± 0.56 ^a	6.09 ± 0.68 ^a	2.69 ± 0.19 ^c	3.86 ± 0.35 ^b	3.90 ± 0.61 ^b
GSSG (mmol/g)	0.58 ± 0.02 ^a	0.61 ± 0.01 ^a	0.32 ± 0.09 ^b	0.37 ± 0.08 ^b	0.39 ± 0.03 ^b
GSH-Px (U/g)	1.33 ± 0.04 ^a	1.38 ± 0.09 ^a	0.71 ± 0.07 ^c	0.81 ± 0.04 ^b	0.89 ± 0.05 ^b
SOD (U/g)	87.18 ± 2.98 ^a	88.17 ± 4.12 ^a	48.52 ± 7.18 ^c	63.32 ± 5.27 ^b	67.28 ± 6.06 ^b
CAT (U/g)	179.55 ± 11.56 ^a	181.96 ± 9.88 ^a	114.54 ± 8.61 ^c	159.45 ± 8.05 ^b	163.08 ± 10.72 ^b
Oxidants					
MDA (nmol/g)	691.05 ± 22.67 ^c	689.34 ± 19.03 ^c	1384.14 ± 31.45 ^a	789.58 ± 18.67 ^b	775.45 ± 15.98 ^b
NO (mmol/g)	17.46 ± 1.03 ^c	17.44 ± 0.97 ^c	41.55 ± 2.61 ^a	31.91 ± 3.32 ^b	29.06 ± 2.05 ^b

Each value represents the mean of six rats ±SD. Means with different superscript letters in the same row indicate significant differences at $p \leq 0.05$. GSH, reduced glutathione; GSSG, oxidized glutathione; GSH-Px, glutathione peroxidase; SOD, superoxide dismutase; CAT, catalase; MDA, Malonaldehyde; NO, nitric oxide.

Table-6. Effect of Gravidola aquatic extract (GAE) on liver ROS and TNF- α level of hepatotoxic rats induced by CCl₄

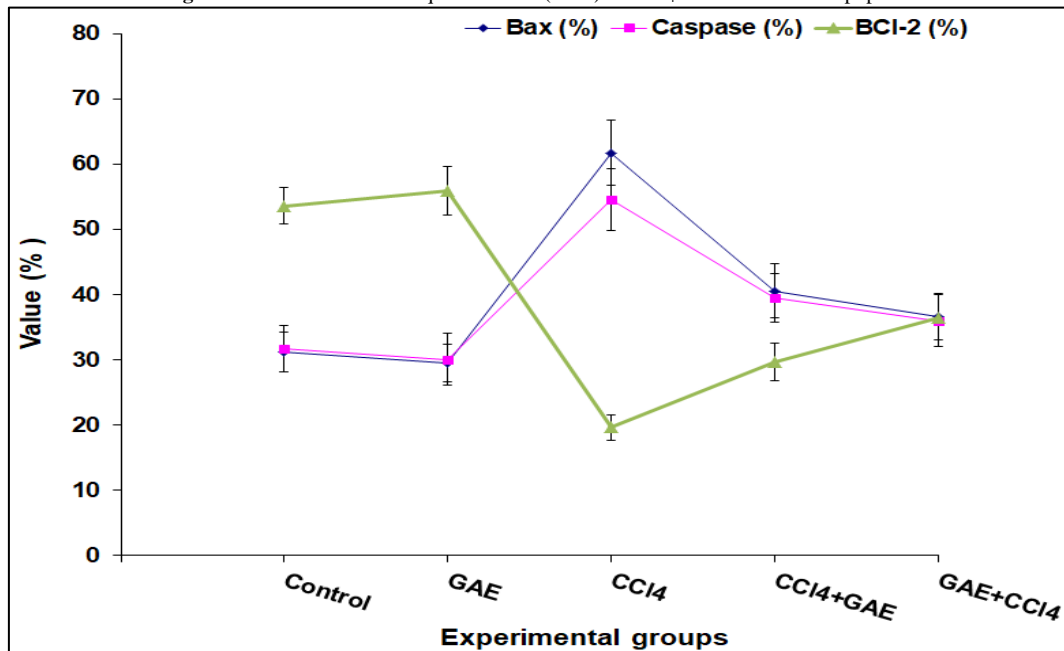
Parameters	Control	GAE	CCl ₄	CCl ₄ +GAE	GAE+CCl ₄
ROS (nmol/g)	0.55 ± 0.08 ^c	0.46 ± 0.04 ^d	2.01 ± 0.09 ^a	1.35 ± 0.04 ^b	1.19 ± 0.06 ^b
TNF- α (pg/mg)	14.05 ± 1.11 ^c	13.91 ± 1.32 ^c	30.67 ± 2.01 ^a	24.43 ± 1.42 ^b	22.12 ± 1.98 ^b

Each value represents the mean of six rats ±SD. Means with different superscript letters in the same row indicate significant differences at $p \leq 0.05$. ROS, reactive oxygen species; TNF- α , tumor necrosis factor-alpha.

Table-7. Effect of Gravidloa aquatic extract (GAE) on CCl₄-induced liver cell apoptosis

Parameters	Control	GAE	CCl ₄	CCl ₄ +GAE	GAE+CCl ₄
Bax (%)	31.21 ± 3.54 ^c	29.52 ± 3.98 ^c	61.71 ± 4.69 ^a	40.56 ± 3.76 ^b	36.54 ± 4.02 ^b
Caspase (%)	31.74 ± 3.07 ^c	30.09 ± 2.88 ^c	54.57 ± 5.01 ^a	39.53 ± 4.17 ^b	36.00 ± 3.56 ^b
Bcl-2 (%)	53.61 ± 4.01 ^a	55.90 ± 2.76 ^a	19.65 ± 3.67 ^d	29.72 ± 1.98 ^c	36.45 ± 2.84 ^b

Each value represents the mean of six rats ±SD and % of change. Means with different superscript letters in the same row indicate significant differences at $p \leq 0.05$. Bax, apoptosis regulator Bax/Bcl-2-associated X protein, Bcl-2, antiapoptotic protein B-cell lymphoma 2.

Figure-1. Effect of Gravidloa aquatic extract (GAE) on CCl₄-induced liver cell apoptosis

Each value represents the mean of six rats ±SD and % of change. Means with different superscript letters in the same row indicate significant differences at $p \leq 0.05$. Bax, apoptosis regulator Bax/Bcl-2-associated X protein, Bcl-2, antiapoptotic protein B-cell lymphoma 2.

Figure-2. Effect of GAE on the histopathological alterations induced by CCl₄ in rats liver (H and E X 400)

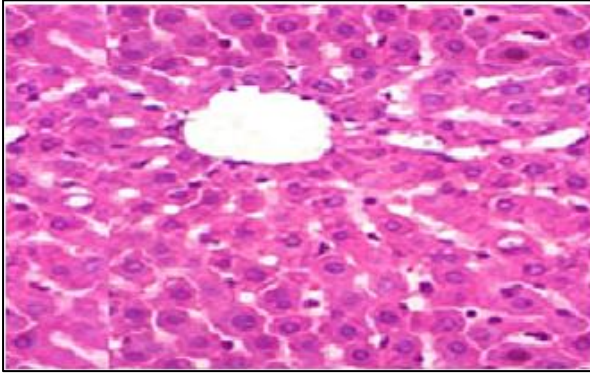


Photo 1. Control group showing normal hepatocytes arranged in cords around the central vein

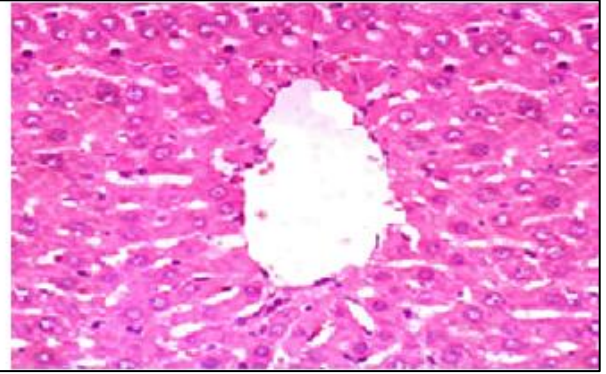


Photo 2. GAE group showing the normal histological structure of hepatic lobule

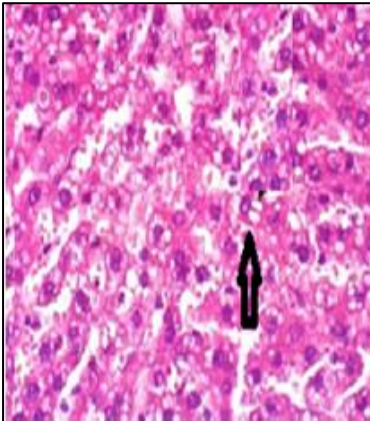


Photo 3. CCl₄ group showing hepatocellular steatosis

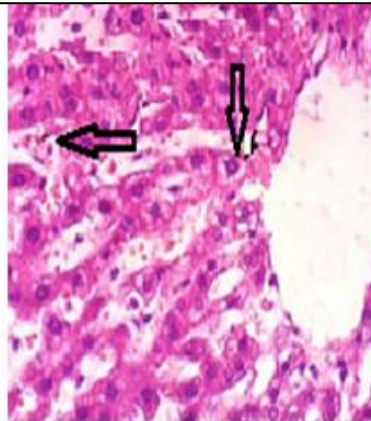


Photo 4. CCl₄ group showing congestion of hepatic sinusoids

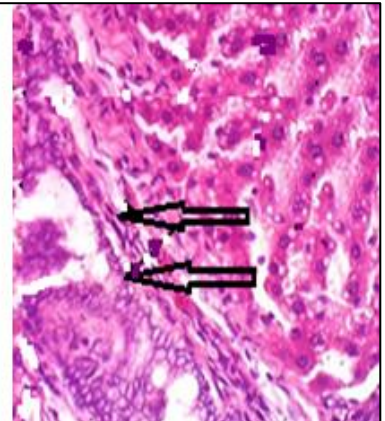


Photo 5. CCl₄ group showing hyperplasia of biliary epithelium and fibroplasia in the portal triad

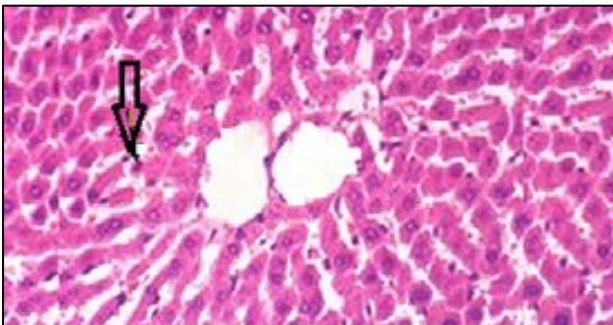


Photo 6. CCl₄ + GAE group showing necrosis of sporadic hepatocytes

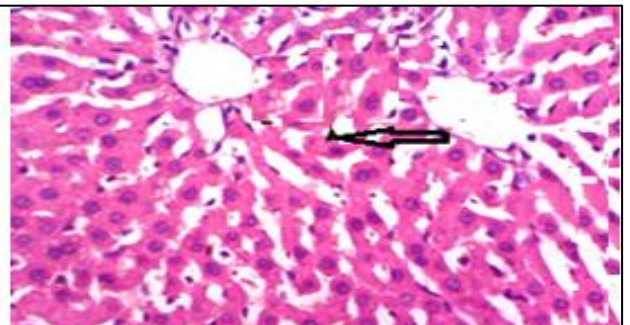


Photo 7. GAE + CCl₄ group showing the only change, slight Kupffer cells activation.